

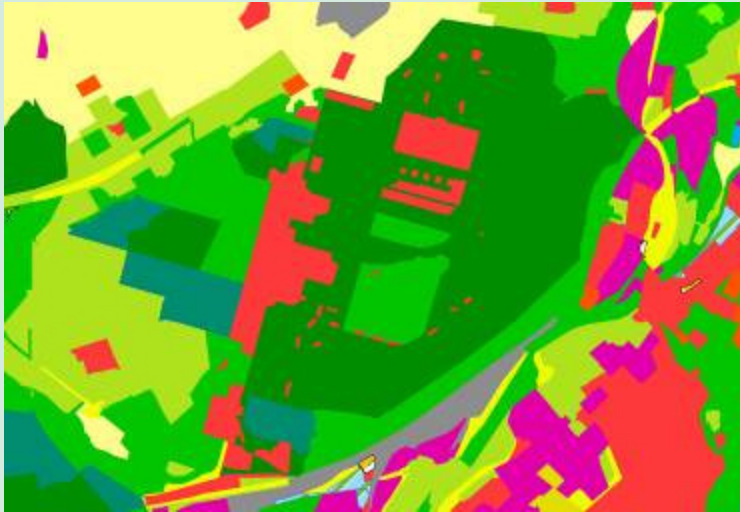
Feasibility of European Cooperation in Harmonising Land Cover Data

Andreas Busch

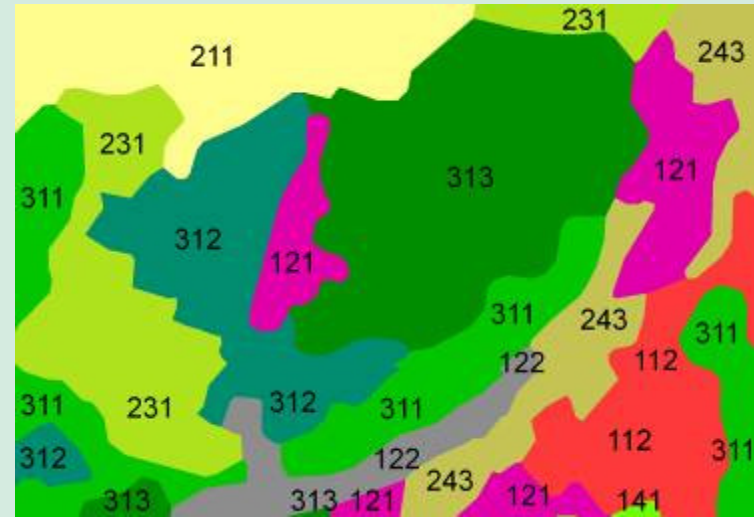
Bundesamt für Kartographie und Geodäsie (BKG)
(Federal Agency for Cartography and Geodesy)

Frankfurt am Main
Germany

Harmonising ...



Topographic Reference
Data (ATKIS)



Land Cover Data

&

Harmonising Topographic Reference Data and Land Cover Data

- Cooperation of
 - Federal Bodies, e.g. Federal Environment Agency (UBA) and BKG
 - Federal Bodies and Private Companies, e.g. DeCOVER
- Expert group comparing object catalogues of
 - Topographic Reference Data (ATKIS)
 - CLC
- To be integrated in Federal Digital Landscape Model (DLM-DE)

EuroGeographics

Association of National Mapping and Cadastral Agencies (NMCAs)

- > 40 Members
- Harmonised European Products
e.g. Euro Regional Map, Euro Global Map
- Bottom-up approach

- Principles of INSPIRE Directive
 - Harmonisation
 - Interoperability
 - Integration
 - Consistency (Cross Border, Cross Scale, Cross Theme)
- GMES
 - Better Minimum Mapping Units (MMU: 1ha, < 1ha)
 - Better Ground Resolution and Repetition Rates of RS Satellites
 - Need for Interoperability of Remote Sensing Data and In-situ Data, e.g Topographic Data

Topographic Data have to be geometric reference (skeleton)

Need for Harmonisation and Cooperation

- Our planet is changing very fast ...
 - Need for high resolution data
 - Need for up-to-date information (... real-time)
 - Integration
- Reporting to European Commission has to be ...
 - Efficient
 - Economic
 - Conform to INSPIRE



There is need to cooperate!

Let us discuss how to cooperate!